



**WASHTENAW COUNTY
FINANCE DEPARTMENT**

Purchasing Division

P.O. Box 8645, 220 N. Main,
Ann Arbor, MI 48107-8645
Phone (734) 222-6760 Fax (734) 222-6764
www.purchasing.ewashtenaw.org

January 21, 2011

Addendum #2

RFP No. 6582

Title: Solar Photovoltaic System – 200 N. Main

Opening Date: Monday, January 31, 2011 at 2:00PM

1. Any inverter (micro-inverters included) must be approved for eligibility by the DTE Solar Currents Program.
2. If the proposal requires relocation of the satellite dish (small television satellite) based on pV collector configuration, relocation and reorientation of the satellite dish will be coordinated by the County, but bidder will be responsible to make sure there is an acceptable alternate location for the satellite dish in their collector layout plan
3. It is anticipated that a contract will be executed in February 2011. Work is anticipated for completion by September 30, 2011.
4. The roof is a Firestone rubber membrane roof. Part of the bid shall include the provision of a Firestone rubber roof installation/repair certificate.
5. The location of the inverter(s) can be proposed with the bid response (i.e. mechanical room, other inside location, outside location, etc.)

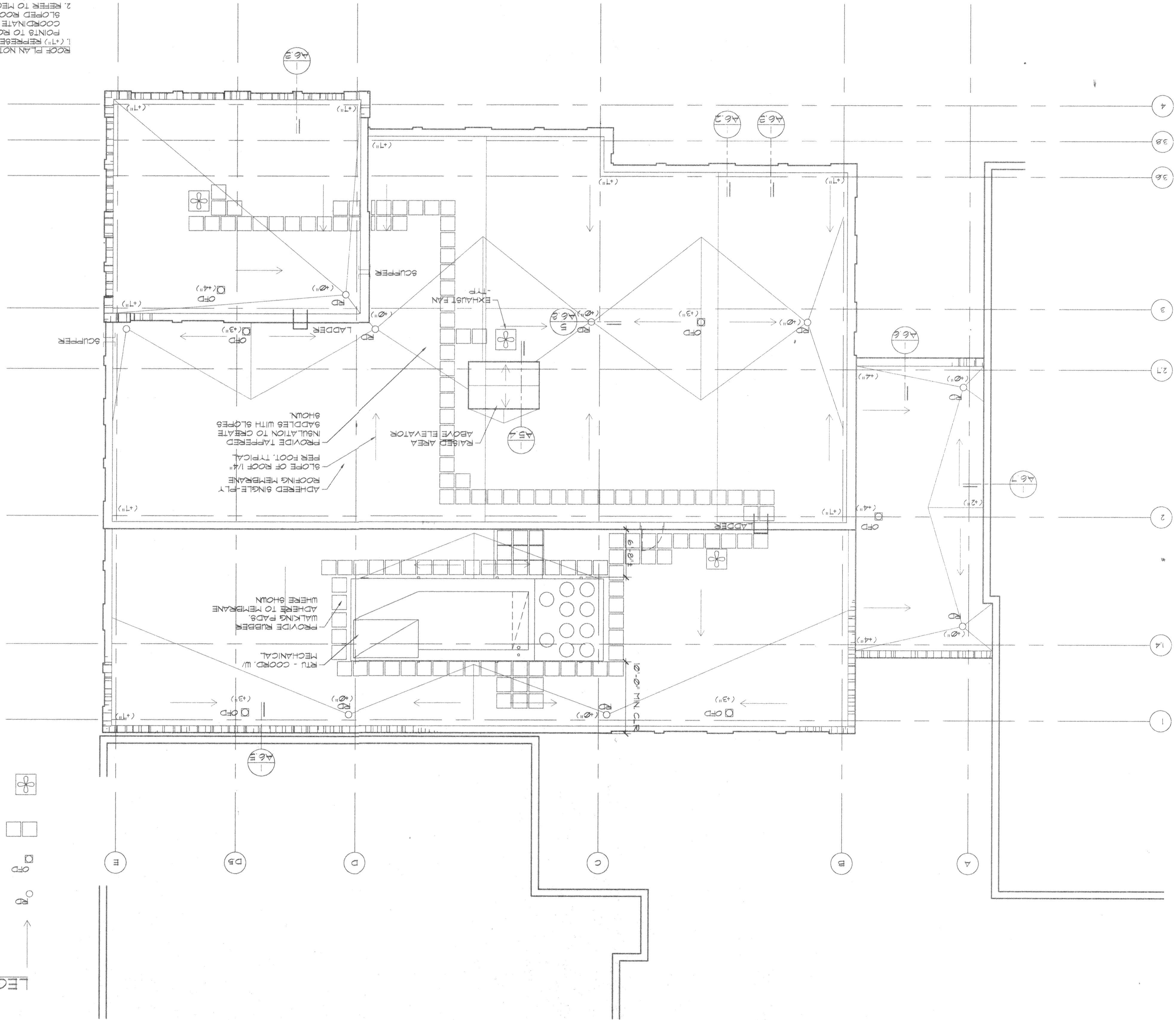
6. An additional roof plan has been provided at http://www.ewashtenaw.org/government/departments/finance/purchasing/online_bids/open_bids.html. The scale referenced is for a 24 X 36 inch print.

The opening date remains as previously indicated on Monday, January 31, 2011 at 2:00PM. Acknowledgement of receipt of this addendum by the bidder must be recorded on page P1 of the submitted bid document proposal.

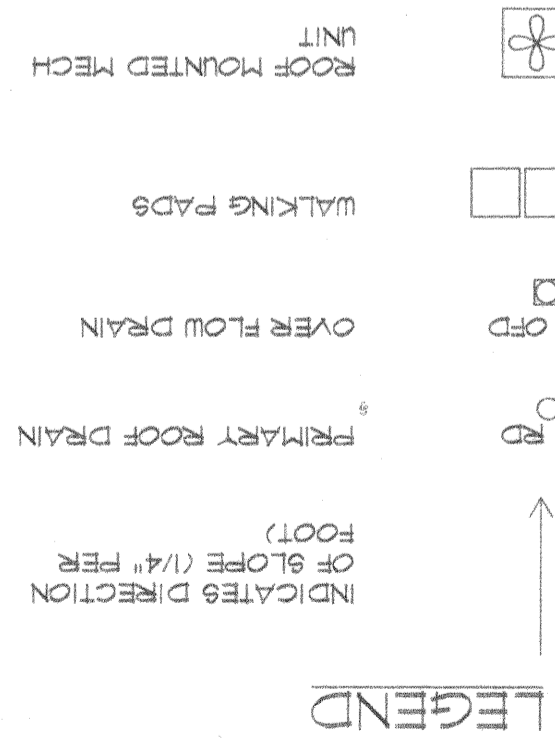
Robert Devault, CPM
Purchasing Manager

cc: RFP6582

Roof Plan
SCALE: 1/8"=1'-0"



ROOF PLAN NOTES:
1. (+') REPRESENTS TO RELATIVE HIGH POINTS TO ROOF DRAIN (RD). COORDINATE WITH STRUCTURAL FOR SLOPED ROOF DECK.
2. REFER TO MECHANICAL DRAWINGS FOR ADDITIONAL ROOF PENETRATIONS AND LOCATIONS.



Title:
Roof Plan
A3.1

Date: 3/15/99
Issued For: BIDS

Project:
**Washtenaw County
Government Services Building
Ann Arbor, Michigan 48104**

archetype
734-662-8070
ANN ARBOR, MICHIGAN 48104

MITCHELL and MOUNT ARCHITECTS
113 SOUTH FOURTH AVENUE
ANN ARBOR, MICHIGAN 48104
734-662-8070

330 South Main Street, Suite 220
Ann Arbor, Michigan 48104
734-665-1180